

Model Number

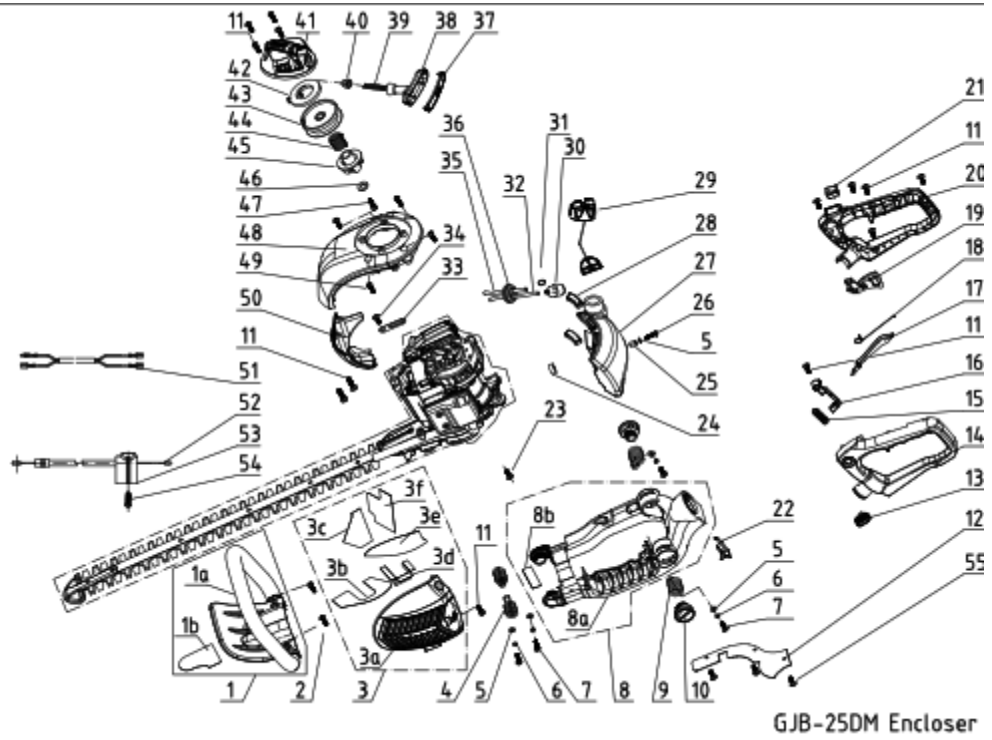
Mac Allister MHTP24-2



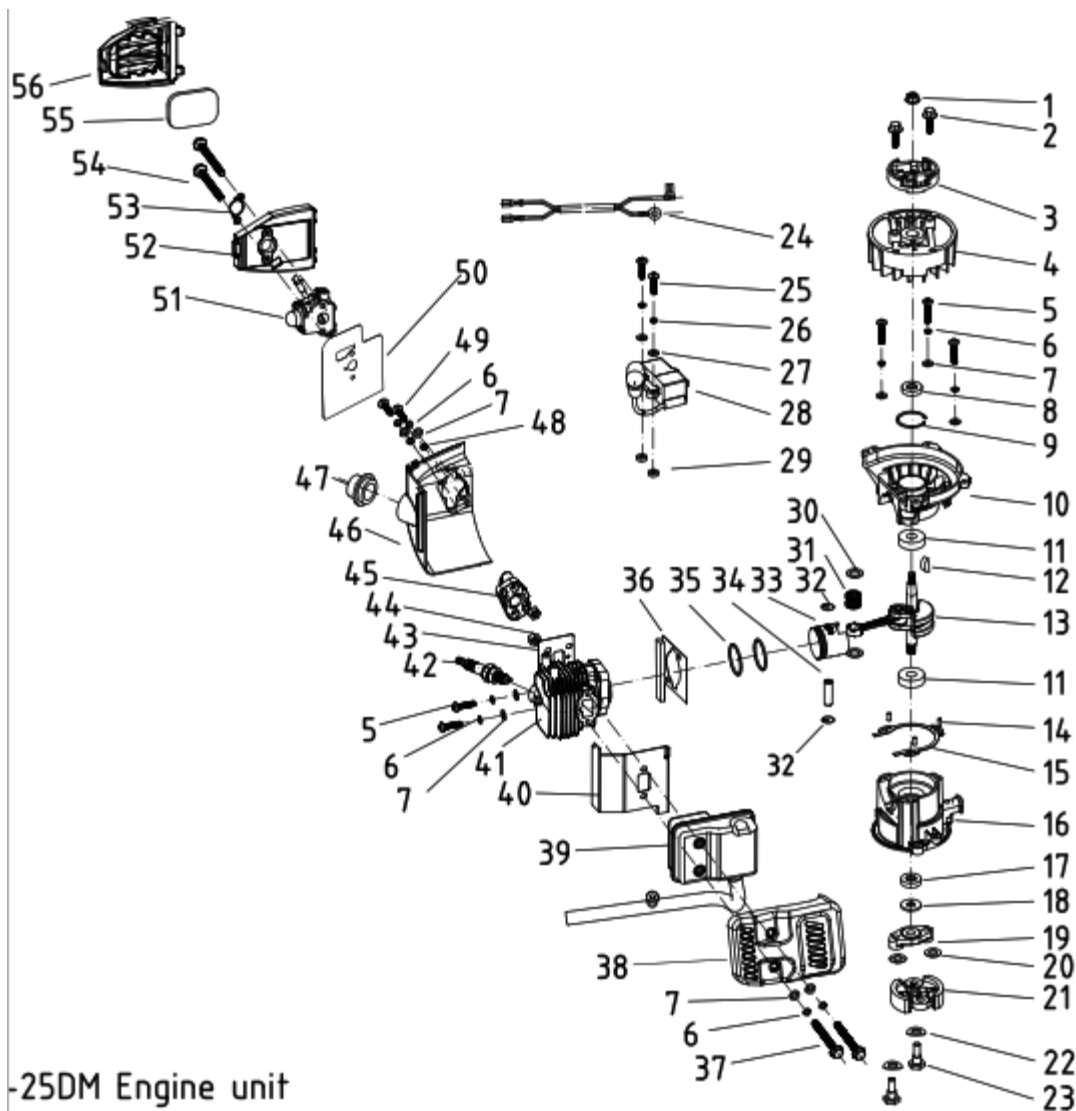
24cc Hedge Trimmers

Parts Manual

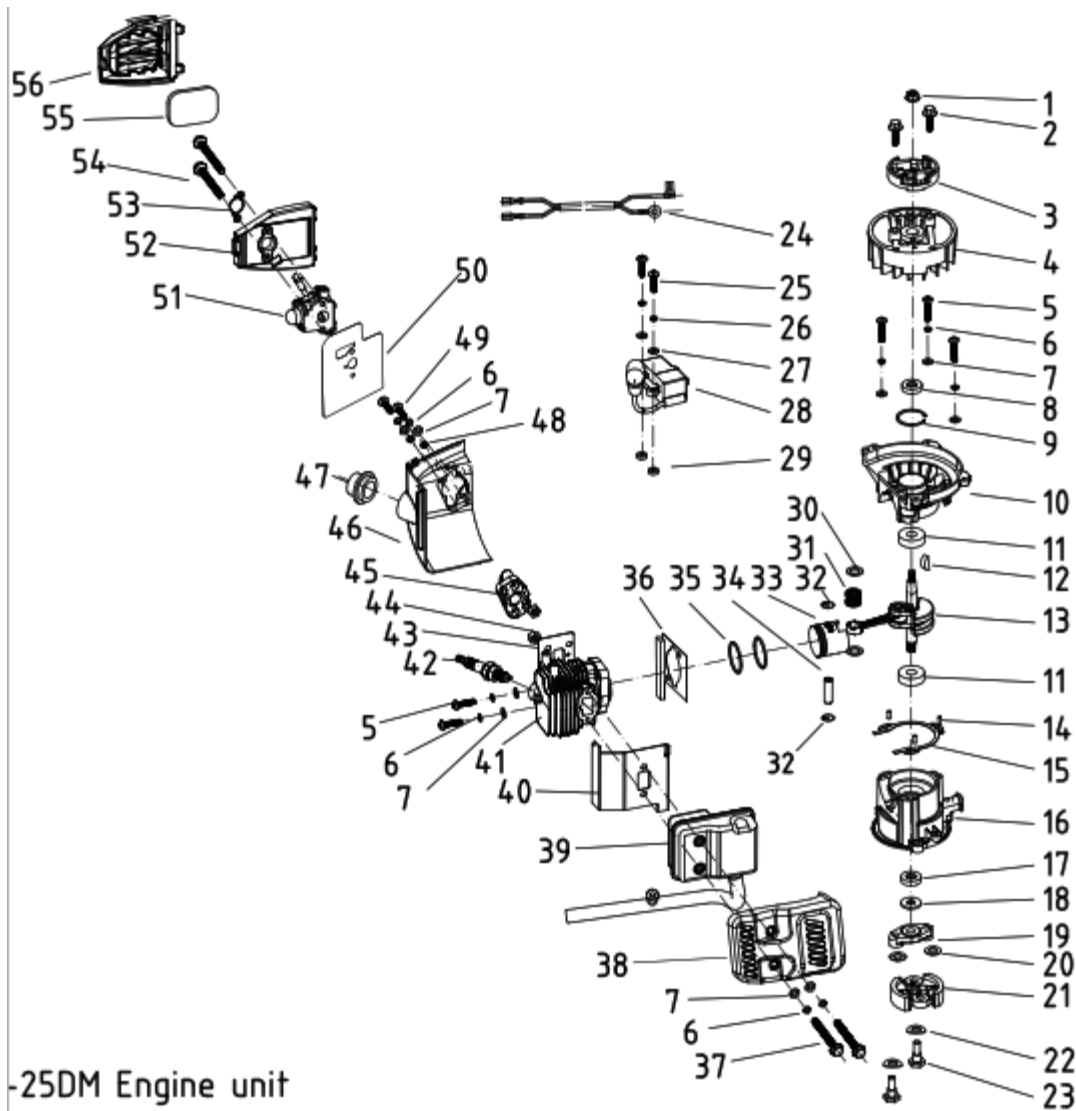
Exploded Diagram 1 – Cutting Unit



Exploded Diagram 2 – Enclosure Unit



## Exploded Diagram 3 – Engine Unit



Part ID	Apelson PN	MPN	Part Description	Qty
Diagram 1 - Cutting Unit				
1	GP0000003482	B25.0113.0007	CLUTCH DRUM	1
2	GP0000002993	GB/T97.1	PLAIN WASHER 5	15
3	GP0000002992	GB/T93	SPRING LOCK WASHER 5	15
4	GP0000002941	GB/T2672	BOLT M5×12	2
5	GP0000003483	B25.0113.0003	GEAR CASE	1
6	GP0000002993	GB/T97.1	PLAIN WASHER 6	4
7	GP0000002992	GB/T93	SPRING LOCK WASHER 6	3
8	20061119	GB/T2671.2	HEX SCREW M6×22	3
9	20050907	B25.0113.0008	GEAR CASE GASKET	1
10	20058036	B25.0113.0005	LINK ROD WASHER	2
11	20062673	B25.0113.0100	GREASE NIPPLE	1
12	GP0000003014	GB/T276	BEARING 6001-2Z 12×28×8	2
13	GP0000002941	GB/T2672	SCREW M4×10	4
14	GP0000003018	GB/T893.1	CIRCLIPS FOR HOLES 28	1
15	GP0000003484	B25.0113.0009	GEAR SHAFT	1
16	GP0000003014	GB/T276	BEARING 61805-2Z 25×37×7	2

17	20058037	B25.0113.0006	ECCENTRIC GEAR	1
18	20058040	B25.0113.0010	LINK ROD	2
19	GP0000002894	GB/T119.2	PIN 6×35	1
20	GP0000002894	GB/T119.2	PIN 3×9	2
21	GP0000003485	B25.0113.0004	GEAR CASE COVER	1
22	20061119	GB/T2671.2	HEX SCREW M5×18	7
23	GP0000003486	B25.0113.0001	FELT SEAL	1
24	20061119	GB/T2671.2	HEX SCREW M5×30	2
25	GP0000003487	B25.0113.0002	RECTANGULAR PLATE	1
26	20061119	GB/T2671.2	HEX SCREW M5×22	1
27	20061119	GB/T2671.2	HEX SCREW M5×20	3
28	GP0000003488	B25.0614.0002	BOTTOM PLATE	1
29	GP0000003489	B25.0114.0003	BUSH	9
30	GP0000003490	B25.0114.0100	BLADE	2
31	20061119	GB/T2671.2	HEX SCREW M5×25	2
32	GP0000003491	B25.0614.0003	TIP GUARD SPACER	1
33	GP0000003492	B23.0114.0005	BLADE TIP GUARD	1
34	GP0000003493	GB/T6186	ALL-METAL NUT M5	7
35	GP0000003494	B25.0614.0001	TOP PLATE	1
36	GP0000003495	B25.0114.0004	UNSHARPENED PLATE	1
38	GP0000003496	B25.0614.0000	BLADE ASSEMBLY	1
39	GP0000003497	B25.0119.0002	BLADE TRANSPORT GUARD	1
Diagram 2 - Enclosure Unit				
1	GP0000003498		FRONT HANDLE ASSEMBLY	1
1a	GP0000003499	B25.0100.0008	FRONT HANDLE	1
1b	GP0000003500	B25.0100.0015	HEAT ISOLATION FOR HANDLE	1
2	GP0000003501	GB/T2670.1	TAPPING SCREW ST4.8×25	2
3	GP0000003502		MUFFLER COVER ASSEMBLY	1
3a	GP0000003503	B25.0600.0001	MUFFLER COVER	1
3b	GP0000003504	B25.0600.0004	LOWER HEAT ISOLATION	1
3c	GP0000003505	B25.0600.0002	SIDE HEAT ISOLATION	1
3d	GP0000003506	B25.0600.0003	BOTTOM HEAT ISOLATION	1
3e	GP0000003507	B25.0200.0004	UPPER HEAT ISOLATION	1
3f	GP0000003508	B25.0500.0002	REAR HEAT ISOLATION	
4	GP0000003509	B25.0100.0010	FRONT ABSORBER SPRING	2
5	GP0000002925	GB/T96	BIG PLAIN WASHER 5	5
6	GP0000002992	GB/T93	SPRING LOCK WASHER 5	4
7	20061119	GB/T2671.2	HEX SCREW M5×14	4
8	GP0000003510		BASE ASSEMBLY	1
8a	GP0000003511	B25.0100.0009	BASE	1
8b	GP0000003512	B25.0100.0014	HEAT ISOLATION FOR BASE	1
9	GP0000003513	B25.0100.0011	REAR ABSORBER SPRING	2
10	GP0000003514	B25.0100.0012	SPRING BLOCK	2
11	GP0000003501	GB/T2670.1	TAPPING SCREW ST4.2×14	13
12	GP0000003516	B25.0100.0001	WIRE COVER	1
13	GP0000003517	B25.0112.0007	LOCK KNOB	1
14	GP0000003518	B25.0112.0002	REAR HANDLE LEFT COVER	4
15	GP0000003519	B25.0112.0008	RETURN SPRING	1
16	GP0000003520	B25.0112.0006	LOCK LEVER	1

17	GP0000003521	B25.0112.0005	TRIGGER LOCK	1
18	GP0000003522	B25.0112.0004	TRIGGER TORSION ROD SPRING	1
19	GP0000003523	B25.0112.0003	THROTTLE TRIGGER	1
20	GP0000003524	B25.0112.0001	REAR HANDLE RIGHT COVER	1
21	GP0000003525	A38.0306.0500	ENGINE SWITCH	1
22	GP0000003526	B25.0100.0002	HANDLE LOCK	1
23	GP0000002941	GB/T2672	SCREW M5×12	1
24	GP0000003527	B25.0100.0007	RUBBER WASHER	1
25	GP0000003528	B25.0100.0006	FUEL TANK BUSH	1
26	GP0000002941	GB/T2672	SCREW M5×25	1
27	GP0000003529	B25.0111.0003	FUEL TANK	1
28	GP0000003530	B25.0100.0005	FUEL TANK ABSORBER	2
29	GP0000003531	B25.0611.0100	FUEL CAP ASSEMBLY	1
30	GP0000003532	A45.0111.0300	FUEL FILTER	1
31	GP0000003533	A25.0100.0026	CIRCLIP FOR FUEL TUBE	1
32	GP0000003534	B25.0211.0001	FUEL TUBE	1
33	GP0000003535	B25.0100.0100	CORD SPLINT	1
34	GP0000003501	GB/T2670.1	TAPPING SCREW ST4.8×14	1
35	GP0000003537	B25.0211.0002	RETURN TUBE	1
36	20058019	B25.0111.0001	FUEL TUBE BASE	1
37	GP0000003538	B25.0610.0000	STARTER	1
38	GP0000003539	A41.0510.0202	STARTER HANDLE COVER	1
39	GP0000003540	A62.0110.0002	STARTER HANDLE	1
40	20058011	B25.0110.0103	ROPE	1
41	GP0000003121	A25.0110.0101	ROPE JACKET	1
42	GP0000003541	B25.0610.0101	STARTER COVER	1
43	GP0000003542	B25.0110.0102	COIL SPRING	1
44	20067173	B25.0310.0101	REEL	1
45	20058065	B25.0310.0103	TORSION SPRING	1
46	20067174	B25.0310.0102	RATCHET WHEEL	1
47	GP0000002925	GB/T96	WASHER 5×12×1.5	1
48	GP0000003501	GB/T2670.1	SCREW ST4.8×13	1
49	GP0000003544	B25.0310.0001	TOP COVER	1
50	GP0000002941	GB/T2672	SCREW M5×16	4
51	GP0000003545	B25.0210.0002	FRONT COVER	1
52	GP0000003546	B25.0112.0100	GROUNDING WIRE B	1
53	GP0000003547	B25.0212.0100	THROTTLE CABLE	1
54	GP0000003548	B25.0200.0002	CABLE BRAKE	1
55	GP0000002941	GB/T2672	SCREW M4×14	1
56	GP0000003501	GB/T2670.1	TAPPING SCREW ST4.2×14	3
Diagram 3 - Engine Unit				
1	GP0000003549	GB/T6187.1	HEXAGON NUT WITH FLANGE M6	1
2	GP0000003550	GB/T70.2	HEX SCREW M6×16	2
3	GP0000003551	B25.0101.0400	START PULLEY ASSEMBLY	1
4	GP0000003552	B25.0106.0100	ROTOR WHEEL	1
5	20061119	GB/T2671.2	HEX SCREW M5×25	5
6	GP0000002992	GB/T93	SPRING LOCK WASHER 5	9
7	GP0000002993	GB/T97.1	PLAIN WASHER 5	9
8	GP0000003553	B25.0101.0500	OIL SEALS 10×26×5	1

9	GP000003018	GB/T893.1	CIRCLIPS FOR HOLES 26	1
10	GP000003554	B25.0102.0001	TOP CRANKCASE	1
11	GP000003014	GB/T276	BEARING 6000 10×26×8	2
12	20061664	GB/T1099	KEY 3×3.5×10	1
13	GP000003555	B25.0103.0100	CRANKSHAFT	1
14	GP000002894	GB/T119.2	PIN 3×9	3
15	GP000003556	B25.0102.0003	CRANKCASE GASKET	1
16	GP000003557	B25.0102.0002	BOTTOM CRANKCASE	1
17	20057984	B25.0101.0600	OIL SEALS 10×20×5	1
18	GP000003558	B25.0101.0007	WASHER FOR CLUTCH BRACKET	1
19	GP000003559	B25.0101.0008	CLUTCH BRACKET	1
20	GP000003560	B25.0101.0011	WAVE SPRING WASHER	2
21	GP000003561	B25.0101.0300	CLUTCH	1
22	GP000003562	B25.0101.0010	CURVED SPRING WASHER 8	2
23	GP000003563	B25.0101.0009	BOLT FOR CLUTCH	2
24	GP000003564	B25.0106.0300	GROUNDING WIRE A	1
25	20061119	GB/T2671.2	HEX SCREW M4×20	2
26	GP000002993	GB/T97.1	PLAIN WASHER 4	2
27	GP000002992	GB/T93	SPRING LOCK WASHER 4	2
28	GP000003565	B25.0106.0200	IGNITION COIL	1
29	20050590	A25.0101.0002	IGNITION GASKET	2
30	GP000003566	A25.0103.0003	NEEDLE BEARING WASHER	2
31	GP000003567	B25.0103.0300	NEEDLE BEARING 8×11×9	1
32	A3601030003	A36.0103.0003	CIRCLIPS	2
33	20073628	B25.0103.0200	PISTON	1
34	20053538	B25.0103.0002	PISTON PIN	1
35	20053537	B25.0103.0001	PISTON RING	2
36	GP000003568	B25.0101.0200	CYLINDER GASKET	1
37	20061119	GB/T2671.2	HEX SCREW M5×55	2
38	GP000003569	B25.0100.0004	MUFFLER GUARD	1
39	GP000003570	B25.0105.0100	MUFFLER	1
40	GP000003571	B25.0101.0002	GUIDE FLOW PLATE	1
41	GP000003572	B25.0101.0003	CYLINDER	1
42	GP000003573	A45.0106.0500	SPARK PLUG	1
43	GP000003574	B25.0101.0005	FLOW INTO TUBE GASKET	1
44	GP000003575	GB/T6175	NUT M5	2
45	GP000003576	B25.0201.0200	FLOW INTO TUBE	1
46	GP000003577	B25.0101.0001	CYLINDER COVER	1
47	GP000003578	B25.0106.0001	SPARK PLUG COVER	1
48	GP000003579	B25.0101.0013	BUSH	2
49	20061119	GB/T2671.2	SCREW M5×20	2
50	GP000003580	B25.0201.0001	CARBURETOR GASKET	1
51	GP000003581	B25.0201.0100	CARBURETOR WT-1032	1
52	GP000003582	B25.0204.0003	AIR FILTER BASE	1
53	GP000003583	C33.3204.0004	ANTI-SPRAY BARRIER	1
54	GP000002941	GB/T2672	SCREW M5×58	2
55	GP000003584	B25.0204.0002	FILTER	1
56	GP000003585	B25.0204.0001	AIR FILTER COVER	1